

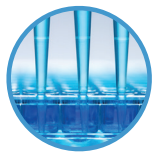
**AmplideX<sup>®</sup>**  
PCR/CE *FMR1* Kit  
mPCR *FMR1* Kit

# AmplideX<sup>®</sup>

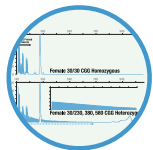
## PCR/CE *FMR1* Kit

The AmplideX<sup>®</sup> PCR/CE *FMR1* Kit\*‡ is a tool to amplify and detect the cytosine-guanine-guanine (CGG) repeat region in the 5'-untranslated region of the fragile X mental retardation-1 (*FMR1*) gene. The assay consists of a polymerase chain reaction (PCR) of genomic DNA purified from whole blood followed by fragment sizing on an Applied Biosystems Genetic Analyzer and conversion of product size to the number of CGG repeats.

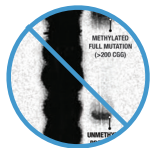
### A PCR-ONLY APPROACH



Reproducible detection of all allele expansions, including low abundance full mutation size mosaics with up to at least 1300 CGG



Definitive resolution of female homozygous and heterozygous samples and indication of interrupting AGG sequences



Reduced need for Southern blot analysis by as much as 10- to 50-fold and up to 875 fold more sensitive than Southern blot



Referenced in more than 3 dozen peer-reviewed publications and used globally in more than 175 laboratories

# AmplideX<sup>®</sup>

## mPCR *FMR1* Kit

AmplideX<sup>®</sup> mPCR *FMR1* Kit\* is a research tool that employs an innovative PCR-only approach for the detection of methylation status in the *FMR1* gene. The reagents can be used for determining the extent of methylation of each allele thus giving a lab professional complete freedom from running tedious and time-consuming Southern blots.

### ASSAY WORKFLOW AND FEATURES



Determines methylation status and quantifies methylation of each allele



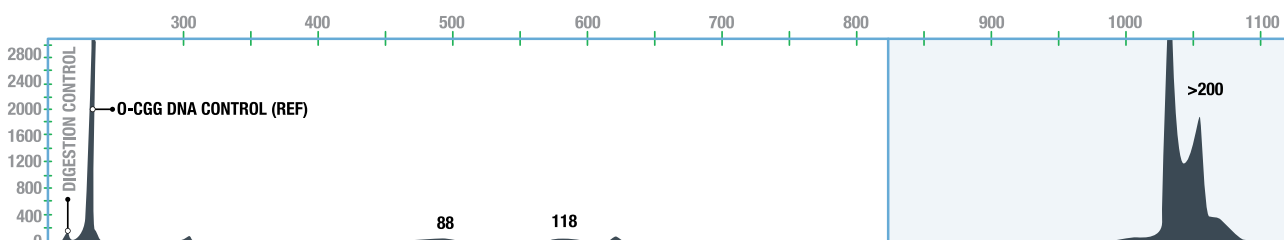
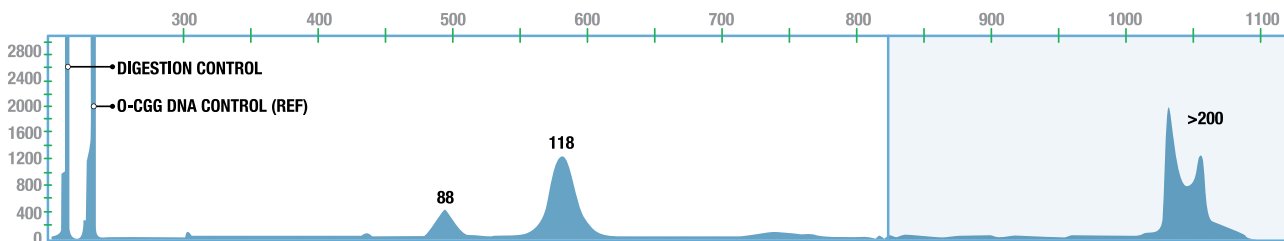
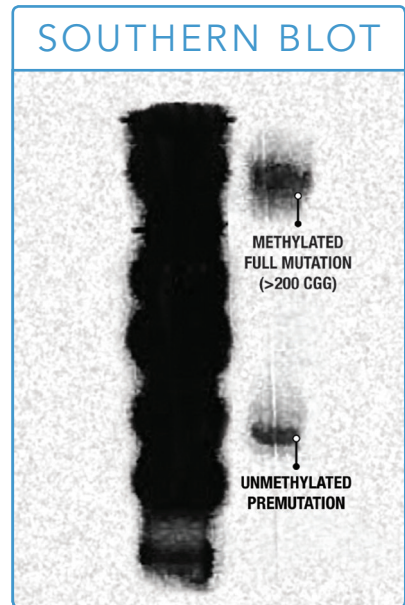
Simplified PCR-only workflow completely eliminates the need for Southern blot while providing higher resolution data



Detects lower abundance methylation and size mosaic alleles



Improves turnaround time by fivefold: 10 hours from DNA to data (as compared to 1 week for Southern blot)



METHYLATION PCR		CALCULATED METHYLATION		
DIGESTION CONTROL (% DIGESTED)		ALLELE 1 88 CGG	ALLELE 2 118 CGG	ALLELE 3 >200 CGG >200 CGG
MF24	99% Fully Digested	1% Unmethylated	0% Unmethylated	100%   100% Fully Methylated

Figure 1 : AmplideX<sup>®</sup> mPCR *FMR1* Kit\* provides intra-assay and allele-specific methylation quantification consistent with Southern blot analysis

\*Research Use Only. Not for use in diagnostic procedures.

Product Name	Number of Reactions	Catalog Number
AmplideX <sup>®</sup> PCR/CE <i>FMR1</i> Reagents*	100	49402
AmplideX <sup>®</sup> PCR/CE <i>FMR1</i> Kit‡	100	76008
AmplideX <sup>®</sup> mPCR <i>FMR1</i> Kit*	24	49442
AmplideX <sup>®</sup> PCR/CE <i>FMR1</i> Reporter*	N/A	49576
AmplideX <sup>®</sup> PCR/CE <i>FMR1</i> Control*	24 µl	49513
AmplideX <sup>®</sup> mPCR <i>FMR1</i> Control*	24 µl	49514

\*For research use only. Not for use in diagnostic procedures. ‡CE-IVD. For US export only.



2500-0410

Distributed by Abacus dx

1800 ABACUS (AUS) 0800 222 170 (NZ) | [info@abacusdx.com](mailto:info@abacusdx.com) | [www.abacusdx.com](http://www.abacusdx.com)

abacus dx